

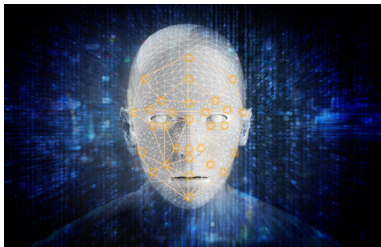
# 人臉識別及區域限制系統實際應用

## Practical applications of Face Recognition and Zone Restriction System



中國港灣工程有限責任公司早於2021年开始应用人臉識別及區域限制系統。此系統安裝在夾石機範圍內，以提升夾石機的安全工作環境及預防意外的發生。所有指定的設備工作人員，必須預先使用人臉識別系統確認其臉容特徵。非設備工作相關人員，必先透過控制區前的人臉識別系統確認其身份，控制區前的鐵閘才會打開，讓操作員進入控制區。

China Harbor Engineering Company Limited (CHEC) started to use a face recognition and zone restriction system since 2021. This system was installed in the crushing plant in order to enhance the safe working environment and prevention of accidents in the crushing plant. All the assigned working staff of the crushing plant must use the face recognition system to confirm their facial features in advance, and establish a list of working staff for the crushing plant. For others, the operator must firstly confirm his identity through the face recognition system in front of the control area. After the confirmation is successful, the steel gate in front of the control area will be opened to allow the operator to enter the control area.



更多詳情，請掃二維碼。  
For more details, Please scan the QR-Code.

